

# User manual

## INSTRUCTIONS FOR RADIO CONTROL OPERATOR SINGLE ENTRY TRANSMITTER MODEL NO.: O220

Read the following instructions thoroughly before using transmitter.

This transmitter must be adjusted so that the coding switches match the coding switches on your present operating transmitter or receiver.

### 1.Remove the transmitter cover

Remove the access cover from the front of the transmitter by sliding the cover away from the top of the transmitter(Figure A).this will expose the battery and the dip switches. the code can be changed using a small screwdriver.

### 2.Setting the code

You may set your transmitter to any code you desire,but be sure the code you set matches o both your transmitter and receiver.

there are 9bit dip switches on your transmitter,each of which can be placed in three different positions(+,0,-). Do not set all switches in same position,such as all +,all -,all 0(Figure B).

**WARNING:**No other adjustments should be made inside the transmitter.

Now that you have selected your personal code,replace the transmitter cover.

User can click the button. A signal transmit out. If the insi dip switch match the receiver switch,receiver will work.

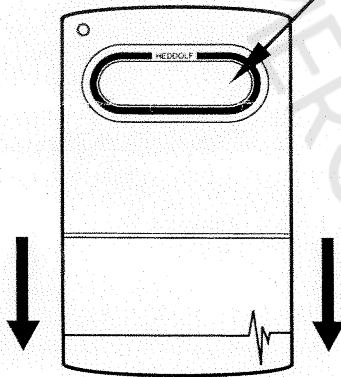


FIGURE A

Dip switch

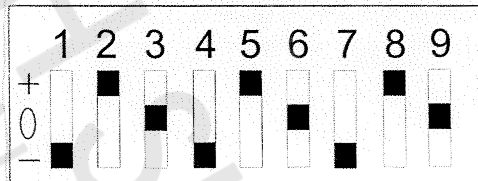


FIGURE B

### FCC NOTE:

This device complies with Part 15 of the FCC Rules. Operation is subject to the following two conditions:(1)this device may not cause harmful interference,and (2) this device must accept any interference received, including interference that may cause undesired operation.

THE MANUFACTURER IS NOT RESPONSIBLE FOR ANY RADIO OR TV INTERFERENCE CAUSED BY UNAUTHORIZED MODIFICATIONS TO THIS EQUIPMENT. SUCH MODIFICATIONS COULD VOID THE USER'S AUTHORITY TO OPERATE THE EQUIPMENT.

By Email: [sales@northshorecommercialdoor.com](mailto:sales@northshorecommercialdoor.com)

North Shore Residential Door  
162 Edgewood Street  
Elyria, Ohio 44035

Phone 800-783-6112  
Fax 440-365-3514