



RSW

The RSW Operator controls industrial vehicular swinging gates up to 350 pounds, with a maximum width of 12 feet. Units can cycle up to 12 times per hour, with a gate speed of 11 seconds from open to close.

Standard Features:

- PSC Motor
- Timer to Close
- Master/Slave Operation
- Left/Right Changeover in Field
- NEMA 1 One-Button Control Station Included
- Standby Power Supply Available



*Complete selection of control stations
& accessories are available.*

**All gate operators must have
contact and non-contact sensing
system installed for operator to
work properly and safely.**

www.VEpower.net

[Facebook.com/PowerMasterOperators](https://www.facebook.com/PowerMasterOperators)

SERVICING THE INDUSTRY SINCE 1969

RSW

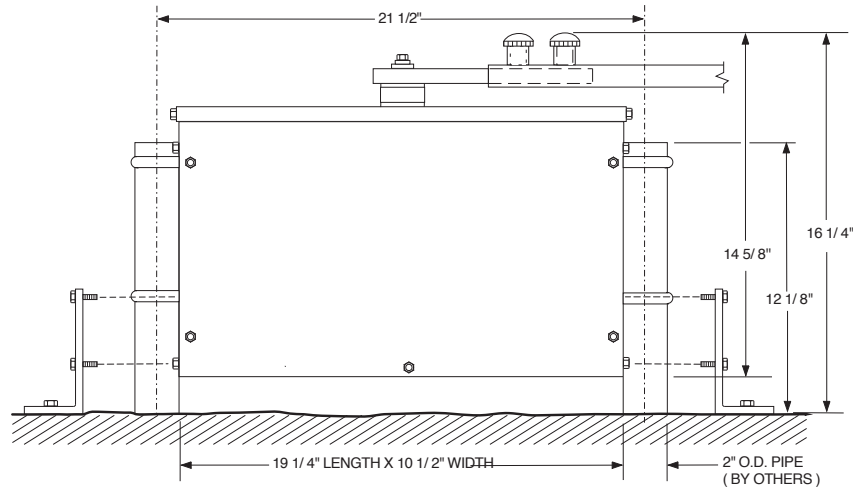
Specifications & Features

TECHNICAL SPECIFICATIONS

- **Available horse power:** 1/2 HP
- **Power requirements:** 115 Volts, 1 phase
- Class 2 low voltage control circuit
- UL 325 Listed for use in Class I through IV applications
- **Gate Capacity:** 350 lbs, 12 ft wide, up to 12 cycles per hour
- **Travel Speed:** 10 seconds to full open or full close
- **Operator Weight:** Approx. 80 lbs.

OPTIONAL EQUIPMENT

- Radio Control
- Safety Edge (contact safety sensor)
- Photo Cell (non-contact safety sensor)
- Loop detector
- Card key reader



MECHANICAL SPECIFICATIONS

- HEAVY DUTY #11 GA. STEEL FRAME
- HARD SHELL, BAKED ON, WEATHER RESISTANT POWDER COATING
- V-BELT PRIMARY REDUCTION FOR SMOOTH, QUIET AND POSITIVE OPERATION
- DRIVE ARM EASILY DISCONNECTED FOR MANUAL OPERATION IN CASE OF POWER FAILURE

CAUTION

A moving gate can cause serious injury or death!

Carefully read and follow all safety instructions, precautions, and guidelines when installing and using this product.

Motorized gates are for vehicles only. Pedestrians must use a separate entrance. **NO ONE SHOULD CROSS THE PATH OF A MOVING GATE!**

Proper reversing devices must be installed on gates to avoid all hazards, pinch points and entrapment. Eliminate all hazards, pinch points and entrapment areas.

Warning signs must be permanently installed and visible to traffic and pedestrians.

Do not mount operating devices accessible through gates or between a gate and wall.

Never allow children to lay in the path of a gate. Never allow children to operate or play with the gate controls.

Follow UL 325 and ASTM F220-02 standards.

Do not install this product unless all hazards, pinch points and entrapment points are protected.

