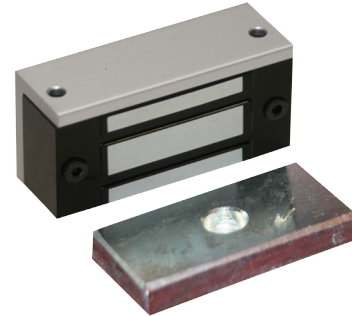


1 Description

The Electromagnetic Lock (Maglife) series is a surface mounted magnetic lock assembly. The 80 lbs. Maglock (10MAGLIFELOCK9) is a small profile model designed for installation on most types of cabinet doors and drawers.



2 Specifications

DESCRIPTION	10MAGLIFELOCK9
HOLDING FORCE	80 lbs.
IMPUT VOLTAGE	12 or 24 VDC
CURRENT DRAW	0.10A @ 12VDC 0.05A @ 24VDC
MAGNET DIMENSIONS	2.75" x 1.22" x 0.70" (70mm x 31mm x 18mm)
MAGNET WEIGHT	0.44 lbs. (0.24kg)
MATERIAL	
Lock Housing	Aluminum
Armature Plate	Zinc Plated Steel

CAUTION

THE 10MAGLIFELOCK9 IS DESIGNED TO BE USED WITH A DC POWER SOURCE ONLY.

DO NOT ATTEMPT TO USE THIS PRODUCT WITH A 24V STEP DOWN TRANSFORMER AND A BRIDGE RECTIFIER OR SERIOUS DAMAGE WILL OCCUR TO THE MAGLOCK. A 24V STEP DOWN TRANSFORMER AND BRIDGE RECTIFIER CIRCUIT WILL YIELD VOLTAGE ABOVE 29V, WHICH EXCEEDS THE LIMITS OF THE SPIKE SUPPRESSION CIRCUIT IN THE MAGLOCK, CAUSING PRODUCT FAILURE.

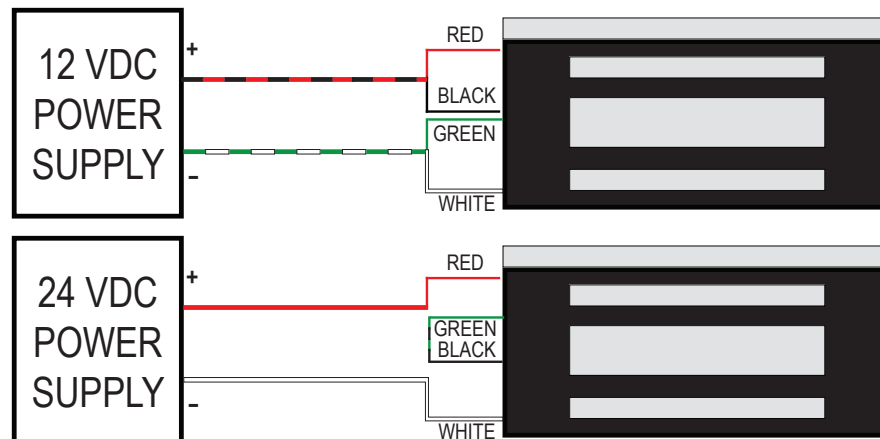
IT IS HIGHLY RECOMMENDED THAT ONLY A FILTERED DC POWER SOURCE BE USED TO POWER THE 10MAGLIFELOCK9. BEA RECOMMENDS THE 10PS12-24 OR SIMILAR QUALITY POWER SUPPLY.

3 Precautions




- Shut off all power before attempting any wiring procedures.
- Maintain a clean & safe environment when working in public areas.
- Always check placement of all wiring before powering up to insure moving door parts will not catch any wires and cause damage to equipment.
- Ensure compliance with all applicable safety standards and building codes upon completion of installation.

4 Installation - Electrical

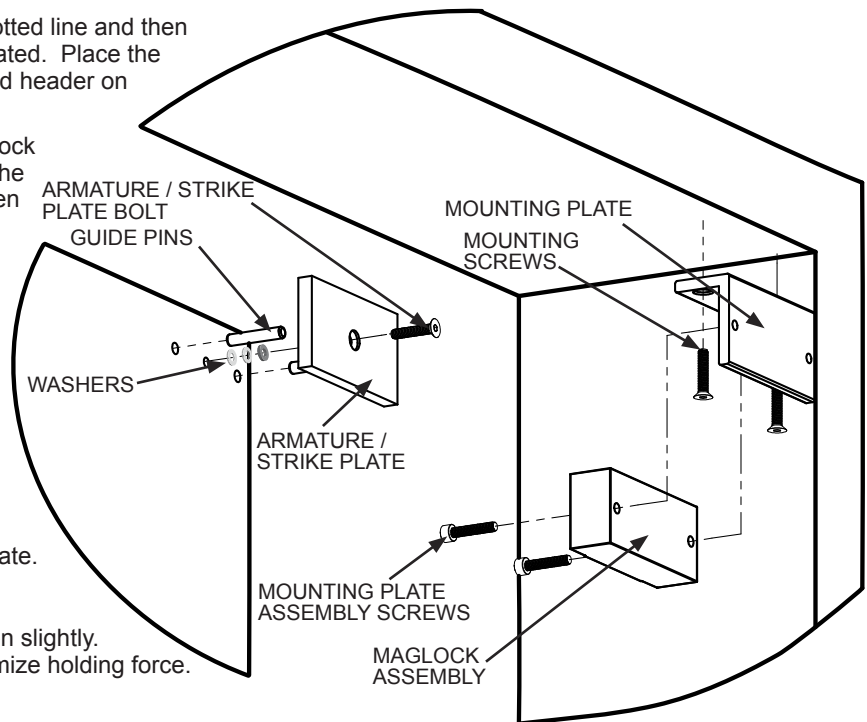


5 Included Components

Picture	Quantity	Specification	LOCK SERIES
	2	STEEL WASHER 12mm* DIA	
	1	ALLEN KEY 3mm	
	1	ARMATURE BOLT RECEIVER M5*32mmL	
	1	ARMATURE BOLT M5*35mm W/RUBBER	
	2	COUNTERSUNK SCREW M4*25mm	
	1	RUBBER WASHER 10mm DIA	
	2	GUIDE PIN 5*16mm	
	2	M4*20mm FIXING SCREW (NYLOCKED)	

6 Installation - Mechanical

- Tip 1: DO NOT touch the lock face with your hands.
 - Tip 2: Should the surface plating be damaged, use a soft, clean dry cloth or abrasive cloth to clean the lock face. DO NOT use sand paper. A rust inhibitor can be applied to the armature/strike plate and maglock assembly face.
1. Inspect the frame header to determine if an angle bracket or filler plate is required.
 2. Fold the enclosed mounting template on the dotted line and then mark and drill two 1/8" (3.1 mm) holes as indicated. Place the template against the cabinet door or drawer and header on the lock jamb side of the frame.
 3. Disassemble the mounting plate from the maglock assembly. Insert (2) M4 x 25 mm screws into the mounting plate holes and secure. Do not tighten these screws fully until the maglock is properly aligned.
 4. Gently tap guide pins into the rear side of the armature. Drill matching holes on the cabinet door or drawer to receive these pins.
 5. Align armature/strike plate to cabinet door or drawer and then drill a 5/8" (16mm) hole for sexnut. Using the M5 x 32 mm hex head screw and enclosed Allen key, mount armature to cabinet door or drawer using two metal and one rubber washers.
 6. Reassemble maglock assembly to mounting plate.
 7. Make electrical connection (See Item 4).
 8. Ensure that armature/strike plate can be shaken slightly. This will permit full armature contact and maximize holding force.



7 Company Contact



24/7 Tech Support: 1-800-407-4545 | Customer Service: 1-800-523-2462 | General Tech Questions: Tech_Services@beainc.com | Tech Docs: www.beasensors.com