

**DUAL SWITCH
PUSHPLATE**

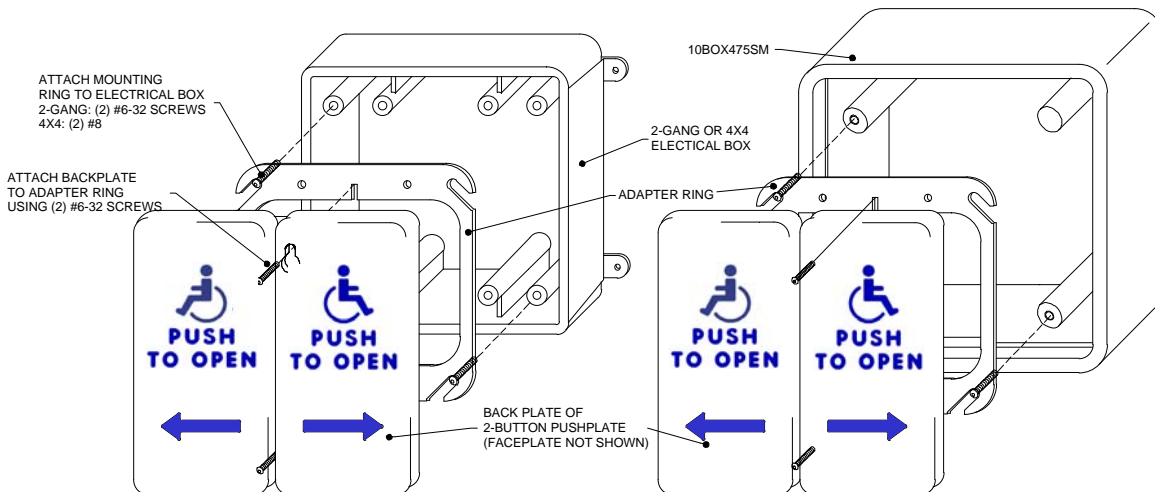
This pushplate is designed to fit into either double-gang or 4x4 electrical boxes. Typical uses include controlling inside and outside doors of a vestibule. The faceplates are made of 1/16" thick stainless steel for durable use. The pushplate may be hard wired to the door operator or connected to one of B.E.A.'s line of radio-controlled transmitters.

**RELATED
OPTIONAL
ACCESSORY**

RADIO CONTROLLED TRANSMITTER AND RECIEVERS: Wide range of analog and digital transmitters and receivers

**INSTALLATION
INSTRUCTIONS**

1. Attach the adapter ring to the electrical box. Use (2) #6-32 screws for 2-gang electrical boxes or (2) #8-32 screws for 4x4 boxes.
2. Wire the switches of the pushplates to the door controllers or radio controlled transmitters using the NO or NC contacts and common.
3. Start (2) #6-32 screws into the center holes of the adapter ring. Place the keyway-shaped holes of the backplate over the holes, and fully tighten the screws with the enclosed hex key.
4. Test the pushplates for proper activation.



**PUSHPLATE
CLEANING**

The pushplates are constructed with durable stainless steel and painted with scuff-resistant coatings. To clean the plates, use only a damp, non-abrasive cloth. Repeated cleaning with harsh solvents or abrasive materials may cause deterioration of the coating. Please make the end-user aware of this procedure.

**TECHNICAL
SUPPORT**

If after troubleshooting a problem, a satisfactory solution cannot be achieved, please call B.E.A., Inc. for further assistance during Eastern Standard Time at **1-800-523-2462 from 7am - 5pm or 1-800-407-4545 from 5pm - midnight & weekends.**

DO NOT leave any problem unresolved. If you must wait for the following workday to call B.E.A., leave the door inoperable until satisfactory repairs can be made. **NEVER** sacrifice the safe operation of the automatic door or gate for an incomplete solution.