

THE FUTURE IS NOW

ACCESS CONTROL REINVENTED

ASCENT
powered by  **SUMMIT CONTROL**

PRODUCT GUIDE

WHO WE ARE

At Security Brands, Inc. we are passionate about designing, manufacturing, and selling the world's most innovative and easy-to-use perimeter access control and security devices. This goal unites our team each and every day and is the hallmark of our customer-service-driven culture. We make a commitment to each of our customers, employees, partners, and shareholders to deliver products with compelling designs, flawless quality, impeccable reliability, and industry-leading usability.

In order to ensure we're offering the best access control products on the market, we focus on continuous improvement. Periodically we ask ourselves a series of questions about each of our products: How can we make it simpler to use? Simpler to install? Simpler to service? How can we make it last longer? How can we make the user experience better?

To this end, our revolutionary line of cellular access control products have taken the old, complicated way of installing and programming and thrown it out the window. Our goal from the outset with these new products was to build hardware and software that not only work together seamlessly but that are designed with the end user in mind. Our brand-new quick-start guides and, most notably, our intuitive cloud-based control platform make installing and using these products so easy. Even users who have never touched a computer a day in their lives can easily set up and enjoy using their access control system.

We never stop refining, improving, innovating, and working for you, our valued customer.



DISCLAIMERS

You should **NEVER** open or close a gate (or other access point) without being in view of, or without having confirmation that, the path is clear and that it is safe to do so.

We recommend using reversing devices whenever possible to help ensure safe operation.

Our products are designed for access control and are not meant to be used without proper safety devices in place.



CONTENTS

| | | |
|----------------------------------|-------------------------------------|----|
| INTEGRATION | ASCENT CONNECT | 2 |
| WHAT IS ASCENT? | | 3 |
| ASCENT CAMERA | | 4 |
| ASCENT X1 PLUS | CELLULAR TELEPHONE ENTRY SYSTEM | 5 |
| ASCENT X2 | CELLULAR MULTI-TENANT ENTRY SYSTEM | 6 |
| ASCENT M2 | CELLULAR MULTI-TENANT ENTRY SYSTEM | 7 |
| SUMMIT CONTROL | CLOUD-BASED CONTROL PLATFORM | 8 |
| THE PERFECT PLAN | FIND JUST THE RIGHT FIT | 10 |
| FAQ (FREQUENTLY ASKED QUESTIONS) | | 12 |
| ASCENT | SAY HELLO TO THE REST OF THE FAMILY | 13 |

WANT A DEMO?

Head to summitcontrol.com/demo for a product demo.
And if you want to learn even more, you can sign up for a one-on-one product consultation!



INTEGRATION

ASCENT CONNECT™

An intelligent and connected world, in which access control has been reinvented from the ground up is the starting point for a truly connected home, hospitality, or business environment. Our Ascent family of intelligent systems powered by Summit Control has laid the foundation to solve problems and create new solutions in your clients' connected world. And we make it easy!

We integrate with products from companies like Crestron and Amazon, but if we do not currently support a certain product you need, let us know so we can add it to the list.

SAFETY AND SECURITY

We provide the access control necessary to secure the environment and control the scene around any gate or door. Need to turn on the lights for added security? Activate a camera or other scene-enhancement device? Ascent Connect has it covered. We give you the upper hand when it comes to securing your perimeter.

CONTROL THE ENVIRONMENT

Why stop at simply securing the environment when you can control it? Wouldn't it be nice to create a special effect or scene as your client approaches your entry point? We can help you do that! Take control of pumps, lights, and many other devices with ease. And with the added convenience of cellular, you have the freedom to do it almost anywhere. Creating a desirable outdoor scene or environment is a great way to subtly influence the ambiance of your client's world and make a big impact.

IOT TO OUR CORE

Summit Control is our cloud-based IoT platform built for flexibility and expandability. It works seamlessly with our Ascent family of cellular products, thus allowing you to solve nearly any integration task, big or small. We're confident that with Ascent Connect, you will finally have that one-size-fits-all solution to your greatest challenges.

.....



WHAT IS ASCENT?

CELLULAR IS BETTER

Because the Ascent family of products are cellular, you don't have to be in close proximity to a wi-fi router to operate your gate or door. And because they're cellular, the Ascent access control systems do not require trenching for long cable runs. No matter how you look at it, Ascent is just better all-around!

HOW IT WORKS

Taking advantage of an ever-expanding cellular network, we've accomplished something with our Ascent family of products that only a few years ago was unimaginable—connecting access control systems easily over large distances and controlling and managing them from anywhere in the world. Whether you're ten feet away or thousands of miles away—it makes no difference—you can control and manage your gate or door with ease.

Cellular access control systems have a huge advantage over their hardwired cousins—no lengthy wire runs! No longer held back by the time, expense, and/or the logistics involved in running a phone line (and other wires) out to your access control unit, you have the freedom to place your system wherever you need it, as long as you have a signal.

With interconnected systems, the primary prohibitive factor was the maximum distance of wire runs; once you exceeded this distance, the signal began to degrade to the point where it was unusable. With our Ascent family of products powered by Summit Control, this is no longer an issue. You can install and control a complete system (made up of many individual units) over a large campus, or even across multiple states, as easily as you would a single system at your own house, and you do it all from a convenient, secure online dashboard.

Reporting is arguably one of the most important security elements of an access control system, and it's one of the key elements built into our Ascent family of products powered by Summit Control. An up-to-date event log is at your fingertips whenever you need it and can be sorted by user, unit, and location. You will always know who has come and gone and when.

Ascent and Summit Control work together in perfect harmony, making access control simple, no matter the scale or scope of your project.



ASCENT CAMERA

OVERVIEW

Now you can see who is at your gate or door with high-definition still photos. Whether taken automatically or when you require, Ascent Camera offers a new level of safety and convenience.

PHOTO CAPTURE

Ascent Camera can be configured to take a photo or series of photos whenever: the call button is pressed, the keypad is used, the gate status input is triggered, an on-demand photo request is made, and more. You determine what makes sense for you.

PHOTO SIZE

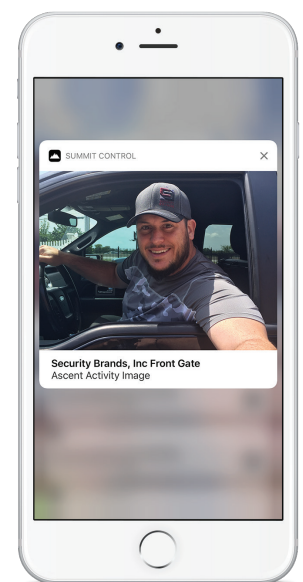
You decide how big your photos need to be based on your own preference and bandwidth constraints. We offer the following image sizes: 320 x 240, 640 x 480, and 1280 x 960 pixels.

PHOTO MANAGEMENT

Easily view all captured photos from the Admin dashboard. From here you will find all of your photos sorted by date and time. Additionally you can capture additional photos on demand.

PHOTO PUSH NOTIFICATION

Up to 5 users (dependent on plan) can receive photo push notifications. When the call button is pressed, our software is designed so that designated users will receive a photo push notification for identification of the guest before the call even comes through. So before you ever talk to that person at your gate or door, you already have a visual ID.



ASCENT X1 PLUS

MODEL
16-X1PLUS

CELLULAR TELEPHONE ENTRY SYSTEM WITH KEYPAD

FEATURES

- 4G LTE cellular
- High-definition Ascent Camera for still photos
- Photo push notifications
- 2 Wiegand inputs
- Control up to 2 gates/doors
- Cloud-based access control management
- Up to 10,000 app, text, and voice users
- Up to 1,000 keypad codes
- Rollover calling—up to 3 phone numbers per user
- Broadcast calling—up to 10 phone numbers per user
- Location-Based Access Control (LBAC)
- Push and/or email event and status notifications
- Ascent Connect integration



powered by  **SUMMIT CONTROL**

VERSATILE & CONVENIENT

Control your gate or door from anywhere using a computer, tablet, or phone.

AN ASCENT WITH A VIEW

Get visual ID on all visitors to your property with photo push notifications; get photos automatically or whenever you choose.

LOCATION-BASED ACCESS CONTROL

Users must be within a defined distance from the unit to open the gate or door.

GET CONNECTED EVERY TIME

Assign multiple phone numbers to be called in order or simultaneously upon call button press, ensuring a connection is always made.



ASCENT X2

MODEL
16-X2

CELLULAR MULTI-TENANT TELEPHONE ENTRY SYSTEM WITH KEYPAD

FEATURES

- Directory panel with customizable inserts
- 4G LTE cellular
- High-definition Ascent Camera for still photos
- Photo push notifications
- 2 Wiegand inputs
- Control up to 2 gates/doors
- Cloud-based access control management
- Up to 10,000 app, text, and voice users
- Up to 1,000 keypad codes
- Rollover calling—up to 3 phone numbers per address
- Location-Based Access Control (LBAC)
- Push and/or email event and status notifications
- Ascent Connect integration



powered by  **SUMMIT CONTROL**

CALLING MADE EASY

Key in the directory code listed next to the resident you wish to call and the unit calls.

AN ASCENT WITH A VIEW

Get visual ID on all visitors to your property with photo push notifications; get photos automatically or whenever you choose.

LOCATION-BASED ACCESS CONTROL

Users must be within a defined distance from the unit to open the gate or door.

GET CONNECTED EVERY TIME

Assign multiple phone numbers to each address to be called one after the other, ensuring a connection is always made.



ASCENT M2

MODEL
16-M2

CELLULAR MULTI-TENANT TELEPHONE ENTRY SYSTEM WITH 7-INCH LCD

FEATURES

- 7-inch backlit high-contrast color LCD screen
- 4G LTE cellular
- High-definition Ascent Camera for still photos
- Photo push notifications
- 2 Wiegand inputs
- Control up to 2 gates/doors
- Cloud-based access control management
- Up to 10,000 app, text, and voice users
- Up to 10,000 keypad codes
- Rollover calling—up to 3 phone numbers per address
- Location-Based Access Control (LBAC)
- Push and/or email event and status notifications
- Ascent Connect integration



powered by  **SUMMIT CONTROL**

VIBRANT, DAY OR NIGHT

Visibility is superb day or night with the 7-inch backlit high-contrast color LCD screen.

NO-NONSENSE INTERFACE

Navigating the on-screen resident directory couldn't be any easier for guests. Simply find your party and press a button to call.

LOCATION-BASED ACCESS CONTROL

Users must be within a defined distance from the unit to open the gate or door.

GET CONNECTED EVERY TIME

Assign multiple phone numbers to each address to be called one after the other, ensuring a connection is always made.



SUMMIT CONTROL

OVERVIEW

Summit Control is the heart and soul of our Ascent family of access control systems. It's what powers every Ascent unit and makes each one so remarkably powerful. You can log in from anywhere to your personalized admin dashboard and securely manage and program any number of units* quickly and easily. Granting and revoking access has never been this effortless.

MORE FEATURES THAN THE REST

Add and manage thousands of users*, quickly add a temporary user, set up multiple timers, search through an event log, and be notified of all activity via push, text, and/or email. It's all possible with Ascent, and it doesn't take an advanced degree to figure it out. We've built this access control solution with you in mind and designed it to be the easiest, most intuitive available on the market today.

NO-HASSLE ACTIVATION PROCESS

Our activation process is as simple as it gets! Once your unit(s) are installed and powered up, simply sign up for an account with Summit Control, and we'll activate your SIM card(s). We've done all the legwork for you by including a T-Mobile SIM card† in every unit we ship, so you're not stuck dealing with the hassle of tracking down and activating your own SIM card.

ALWAYS UP TO DATE

Because it's cloud-based, you automatically get the latest software updates and new features as soon as they're ready. Hardware updates will also be made available for a nominal fee for products that have received an update. With Ascent powered by Summit Control, you're always up to date!

* Total number of units and users allowed dependent on plan.

† AT&T SIM cards are available upon request during unit activation.



CONTROL IT YOUR WAY!™

Summit Control was designed from the ground up with you in mind. No other access control solution on the market is this easy to use. Anyone can use it!

Our simple, yet powerful cloud-based software platform provides you with multiple control methods and a complete set of useful tools, allowing you to quickly and easily customize and control the operation of your access point(s).



CONTROL METHODS

Multiple control options give you versatility and ease of operation.



APP

Turn your phone into a remote! It's free to download and easy to use.



TEXT

Text a command and the unit promptly responds.



VOICE

Make a quick call and follow the automated prompts. So simple!



KEYPAD

Manage thousands of codes remotely and efficiently with ease.



CALL BUTTON

It's essentially an intercom that can call the phone numbers you choose.



DIRECTORY CALL

Dial directly or choose a resident to call from a list. Multi tenant at its best.



WIEGAND DEVICES

Connect keypads and card readers to your main unit for added functionality.

EXPRESS CONTROLS*

These carefully crafted timers were designed to be useful and usable.

AT AUTO-OPEN TIMERS

Set your access point to open automatically (skipping the voice prompt) when a user calls during certain hours.

7T 7-DAY TIMERS

Set your access point to open and close based on five weekly schedules.

HT HOLIDAY TIMERS

Block out specific days to override set timers and keep your access point closed.

ST SPECIAL EVENT TIMERS

Schedule your access point to open then close automatically for a special event.

CT CALL TIMERS

Program your call button to call specific phone numbers based on a schedule.

TZ TIME ZONES

Give your users time-based permissions.

* Availability dependent on plan.



THE PERFECT PLAN

GET MORE INFO!

The most up-to-date rates and complete plan information can always be found on our website. Head to **summitcontrol.com/sign-up** for more.



JUST THE BASICS

RESIDENTIAL BASIC

This is a great option when you're replacing an existing telephone entry system and only the most basic functionality is required.

\$19.95/MO *

A PLAN WITH A VIEW

RESIDENTIAL PLUS W/ CAMERA

If you need more security and would like the convenience of having visual ID of the person at your gate or door, this plan delivers.

\$29.95/MO *

MULTIPLE GATES OR DOORS

RESIDENTIAL PREMIER

When you have more than one gate or entry door, this is your plan. It truly is the premier plan for homeowners with multiple entries!

\$39.95/MO *†

Please go to **summitcontrol.com** to see the most up-to-date rates and complete plan information.

* Price does not include taxes and regulatory fees.

† Eligible plans allow for additional units but do not cover the cost of those units. Additional standard units are \$19.95/mo. Additional units with a camera are \$29.95/mo. Additional multi-tenant units are \$39.95/mo. Taxes and fees may apply.



BUSINESS PLANS

SINGLE LOCATIONS

SMALL BUSINESS

Businesses with 200 employees or less and one to three gates or entry doors will find this plan perfectly suited to their needs.

\$49.95/MO*†

MULTIPLE LOCATIONS

COMMERCIAL

This is perfect for businesses with more than one location, more than three gates or entry doors, and/or more than 200 employees.

\$69.95/MO*†

MULTI-TENANT PLANS FOR ASCENT X2

5 ADDRESSES WITH A VIEW

MULTI TENANT BASIC

For communities with up to 5 addresses and 200 individual users, everyone will enjoy the convenience of multi-tiered administration.

\$39.95/MO*†

30 ADDRESSES WITH A VIEW

MULTI TENANT PREMIER

It's an ideal plan for your apartment, condo, or business property with up to 30 addresses and 1,000 individual users.

\$69.95/MO*†

Please go to summitcontrol.com to see the most up-to-date rates and complete plan information.

* Price does not include taxes and regulatory fees.

† Eligible plans allow for additional units but do not cover the cost of those units. Additional standard units are \$19.95/mo. Additional units with a camera are \$29.95/mo. Additional multi-tenant units are \$39.95/mo. Taxes and fees may apply.



FAQ

FREQUENTLY ASKED QUESTIONS

1 WHY IS THERE A MONTHLY FEE?

Use of the cellular network, the actions gateway, and secure Summit Control servers all carry associated costs. Maintenance, development, and tech support costs are also necessary to ensure the best customer service and best cellular access-control product line on the market.

2 DOES PRICING INCLUDE A T-MOBILE PLAN?

Yes, it does, unless the customer wants to use his or her own SIM card. We offer discounted customer-supplied SIM card plans to accommodate these customers.

3 HOW DO YOU SIGN UP?

Go to the sign-up section on **summitcontrol.com** and follow the steps in the sign-up process. Make sure you have the unit serial number(s) and SIM card number(s) handy.

4 IS A CONTRACT REQUIRED TO SIGN UP FOR SERVICE?

We do NOT have contracts, and you can cancel or change plans anytime you wish.

5 WHAT ARE THE CHANCES OF GOING OVER YOUR PLAN MINUTES?

Even if you have our most basic plan with 300 minutes, you would have to receive hundreds of call-button calls in one month to go over, assuming an average call length of one minute.

6 WILL THE CALL BUTTON ONLY CALL A CELLPHONE?

The call button will call any valid phone number you have programmed into the unit.

7 DO I NEED TO HAVE AN AT&T OR T-MOBILE PHONE?

Any cellphone on *any* network will allow for text and voice control of Ascent. Your personal cellular carrier does not matter!

8 ARE THESE 4G SYSTEMS?

The latest Ascent units run on the 4G LTE network but work great in 3G-only areas.



ASCENT

SAY HELLO TO THE REST OF THE FAMILY

ASCENT K1

CELLULAR ACCESS CONTROL SYSTEM WITH KEYPAD

A simple keypad plus all the cellular functionality you need.

Control up to two gates/doors and grant access via app, text, voice, or keypad!



ASCENT T1

CELLULAR TELEPHONE ENTRY SYSTEM

Smaller and more secure. No sharing codes with this one.

Control up to two gates/doors and grant access via app, text, voice, or call button!



ASCENT C1

CELLULAR ACCESS CONTROL SYSTEM

Our most secure controller that goes where you need it.

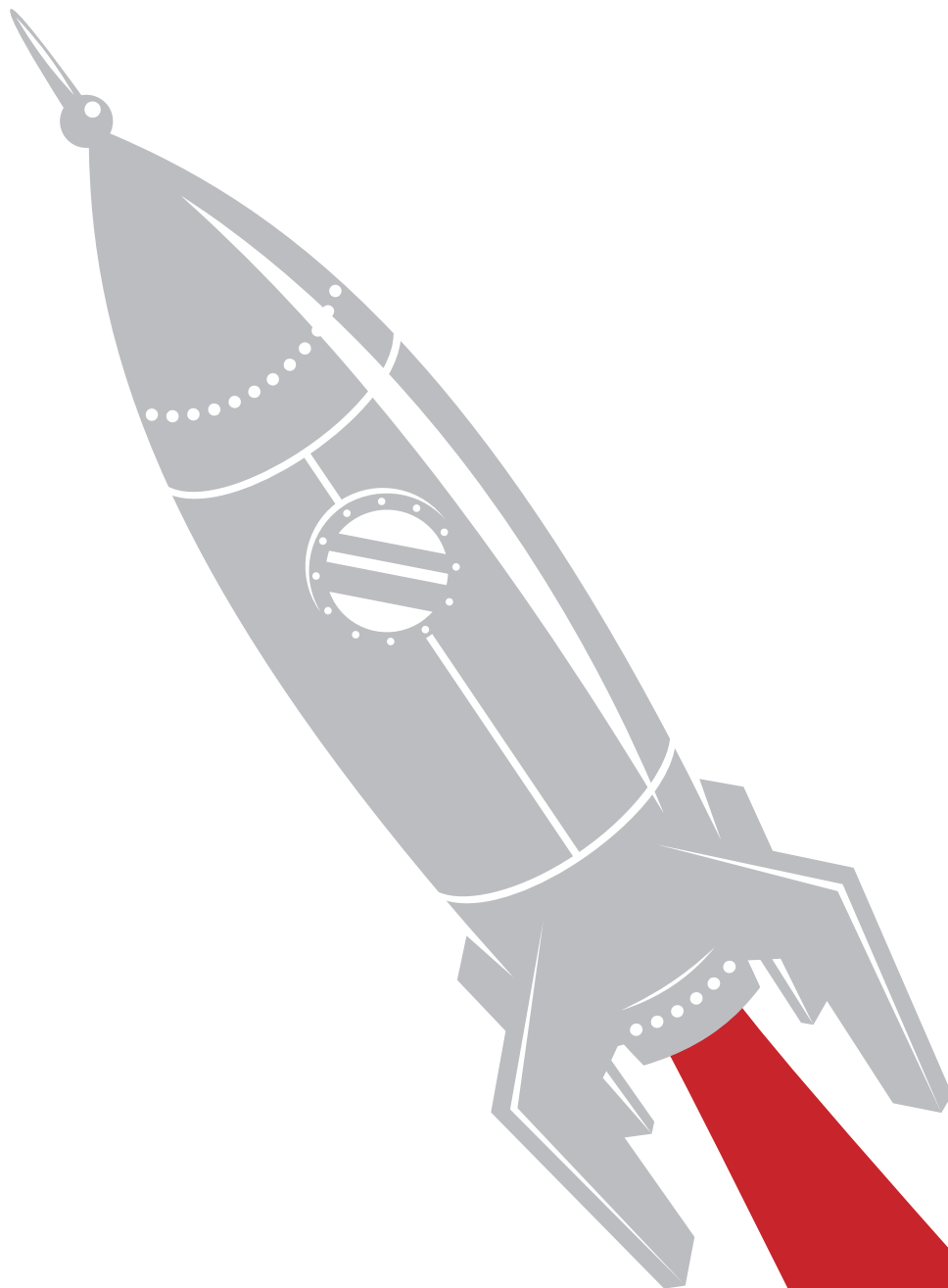
Control up to two gates/doors and grant access via app, text, or voice!



NEW 4G LTE ASCENT MODELS ARRIVING Q4 2017

We never stop innovating so that we can offer you the best, most convenient, and most secure cellular access control products on the market today.

ACCESS CONTROL REINVENTED



ACCESS CONTROL REINVENTED™



SECURITY BRANDS INC™
your *partner* in access control

1675 W Yale Ave
Englewood, CO 80110

securitybrandsinc.com

Tel: (800) 541-5677
Fax: (303) 799-9756