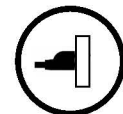


# Programming Remote Controls

## WARNING

To Prevent **SERIOUS INJURY** or **DEATH**:

- Keep remote control and battery out of reach of children.
- **NEVER** permit children to access the Door Control Console, Push Button nor Remote Controls.
- Operate the door **ONLY** when it is properly adjusted, and there are no obstructions present.
- **ALWAYS** keep a moving door in sight until completely closed. **NEVER** cross the path of a moving door.



To reduce risk of fire, explosion or electric shock:

- **DO NOT** short circuit, recharge, disassemble or heat the battery.
- Replace with 23AE 12 Volt batteries **ONLY**. Dispose of batteries properly.

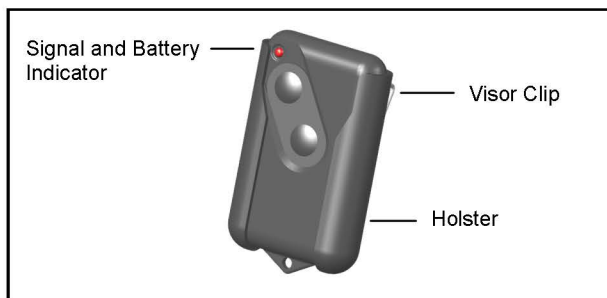


Fig.1

### To Program Remote Control (s):

1. Press/release the “LEARN” button once on the rear control panel, “OK” LED will glow and beep. The unit is now ready to accept a remote control in the next 30 seconds as shown in Fig.2.
2. Press/release any desired button on the Remote Control.
3. The “OK” LED will flash and beep twice indicating Remote Control is stored successfully.

Up to 20 Remote Controls (including wireless keypad codes) can be added to the unit by repeating the above procedures.

If more than 20 Remote Controls are stored, the first stored Remote Control will be replaced. (i.e. the 21st Remote Control replaces the 1st stored Remote Control.)

### Removing ALL Remote Controls:

To remove ALL Remote Controls from memory, press and hold the “LEARN” button for 5 seconds. The “OK” LED will flash and beep 2 times indicating. ALL Remote Controls have been removed from memory.

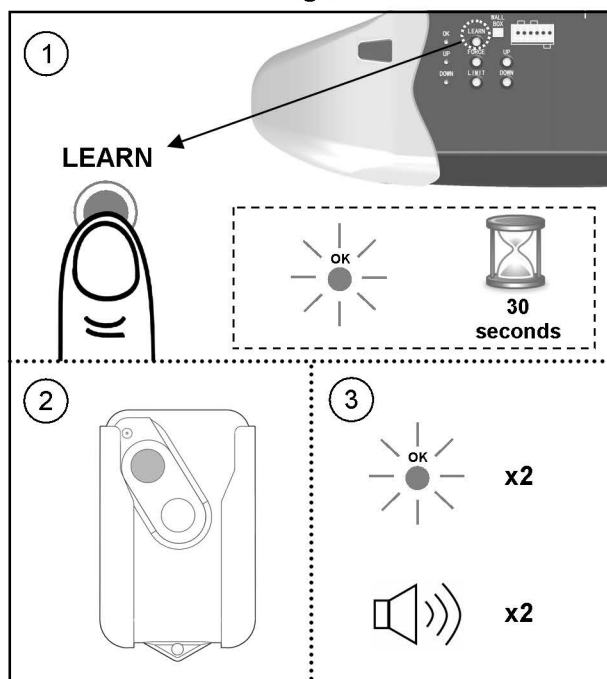


Fig.2

### Replacing Remote Control Battery:

When the battery of the Remote Control is low, the indicator light will become dim and/or the range of the Remote Control will decrease. To replace the battery, remove the battery cover from the Remote Control as shown in Fig.4. Replace with a 23AE 12 volt alkaline battery with polarity shown in Fig.3.

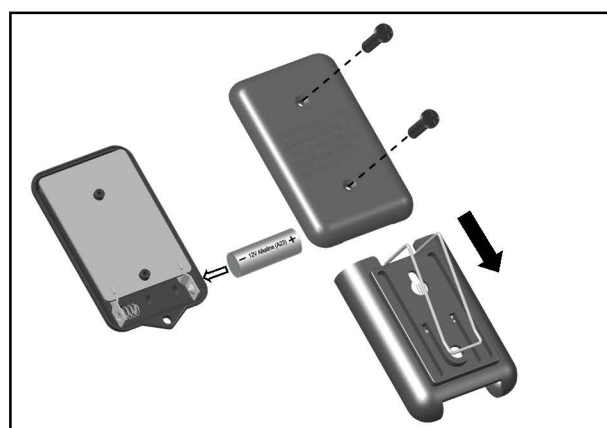


Fig.3

This device complies FCC Rules for HOME OR OFFICE USE. Operation is subject to the following two conditions: (1) this device may not cause harmful interference, and (2) this device must accept any interference received, including interference that may cause undesired operation.