

# SensingEdge

## Applications

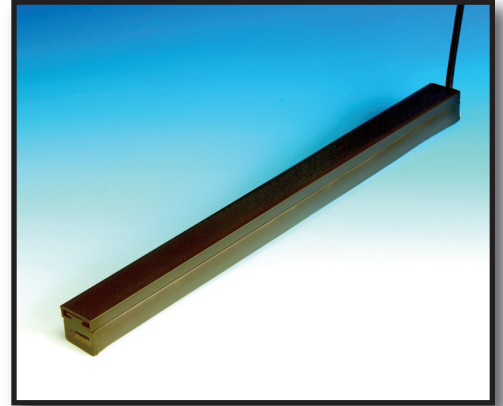
- **Counter Shutters**
- **Emergency Switches**
- **Conveyor Systems**
- **Rolling Doors & Grilles**
- **Barrier Arms**

## About the ME110...

This pressure sensitive electric sensing edge can be adapted to suit a wide variety of applications. It is manufactured to user specifications for length, sensitivity and outlet location. When touched lightly or at an angle, the ME110 sends an immediate signal to stop and/or reverse operations depending upon your particular application. Multiple mounting channel designs allow for easy installation on nearly any surface.

### OPTIONS:

- 4 wire self monitoring
- Soft ends
- Coil Cord attached
- 4-wire intrinsically safe control panel (FSIS-35-4)
- Pneumatic (MEP110) Air-Wave (MAW110)
- Mounting Channels



### TECHNICAL SPECIFICATIONS:

Color:	Black
Length:	per specification to nearest 1/4
Lead Wire:	SJTO, 18 gauge, 2ft. length or 22 gauge universal
Sensitivity:	nominal 4-7 lbf
Electrical Diagram:	2 wire N.O. configuration
Electrical Maximum:	24 volt AC or DC, 1/2 amp
Mechanical Diagram:	See drawings on reverse side
Contact Element:	Alumaglas®
Materials:	Flexible PVC
Mounting Channel:	Rigid PVC
Temperature Range:	-30°F to +155°F
Wire Outlet Location:	Right side, Left side or End

### FUNCTIONAL BENEFITS:

- Touch Sensitive Signalling
- Small Profile
- Easy to Install
- Mounts Vertically or Horizontally
- ANSI/UL325 Recognized Component



Model # ME110

# SensingEdge

## Installation

Place appropriate ME110 mounting channel in desired location. Drill 1/8" holes through channel and into mounting surface every 24". Attach channel to surface with screws. Slide ME110 Sensing Edge into channel and wire to controls.

**Note:** Use 12-24 volt, 1/2 amp AC/DC power. Overload can cause damage. For detailed installation and wiring instructions, contact Miller Edge, Inc.

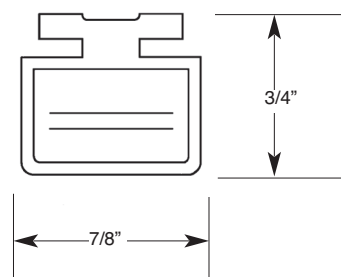
## Care of the ME110. . .

Minimum care is required for the ME110 since it is manufactured with only the most durable materials and the highest quality control standards. However, Sensing Edges should be examined regularly for cuts or punctures which could damage internal components. Check wiring to be sure connections are secure. When properly maintained, the ME110 offers years of trouble free operation.

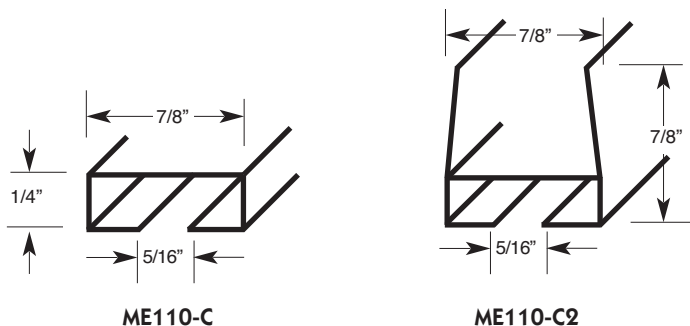
## Warranty

We will replace within one year of shipment from our factory, any Sensing Edge subject to normal use which is found to have defective materials or workmanship, as determined solely by our factory representative. Replacements will be shipped to you freight collect. This warranty is void where evidence of misuse or abuse is present.

## Mechanical Diagrams:



## Mounting Channels:



Contact Miller Edge to ensure compatibility with your operating controls.  
U.S. Patent #5,962,825 & #8,832,996 B2 CAN. Patent #2,008,021

ME110\_Spec\_20140819

P.O. Box 159 • West Grove, PA 19390 • (610)869-4422 • Fax: (610)869-4423 • 800-220-3343  
6809 South Harl Avenue, Suite A, Tempe, AZ 85283 • (480)755-3565 • Fax (480)755-3558 • 800-887-3343  
www.milleredge.com