

# Universal Garage Door Remote Control

Model G6MR

## 1. INTRODUCTION

Congratulations on your purchase of the Skylink® G6MR Universal Garage Door Remote Control. This is a kit with a universal remote control and Smart Button™. Simply replace the traditional wall button by the Smart Button™, that's all for the installation. In this kit, you will find the following:



## 2. INSTALLATION



Unplug the power cord of your garage door opener before installation to ensure power is not connected.

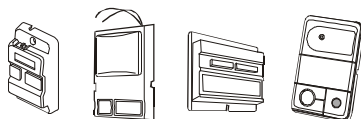
### GTR Smart Button™

The GTR Smart Button™ replaces most garage door “push buttons” or “wall consoles”. There are 2 different kinds of “push buttons”.

#### 1) Single button



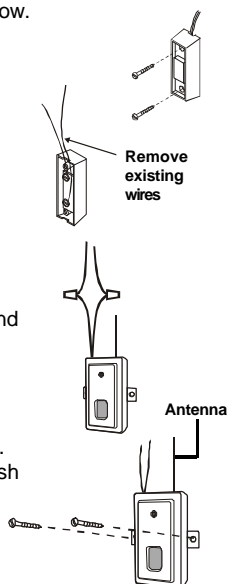
#### 2) Multi-Function Wall Console



#### 1) Single button

If your garage door opener comes equipped with a single button “push button”, you can replace the existing push button with Skylink® Smart Button™ GTR. Please follow the procedures below.

1. Remove the existing push button by removing the screws.
2. Disconnect the 2 wires that are connected to the existing push button.
3. Connect the 2 wires from the existing wall button to the GTR Smart Button™. Twist the 2 wires together with the wire connector provided. Polarity does not matter, so simply pick one wire from the existing wall button, and connect it to one of the wires on the Smart Button™. Do the same for the 2nd wire.
4. After connecting the wires, mount the Smart Button™ on to the wall with 2 screws.
5. Plug in the AC cord of the garage door opener. The red light on the Smart Button™ should flash 15 seconds after plugging in the power. The red light will not flash immediately after plugging in the power, which is normal. The Smart Button™ is now ready to be operated.



*Note: Straighten up the antenna to improve signal reception.*

#### 2) Multi-Function Wall Console

Multi-Function Wall Console normally comes with 3 buttons that can be used to:

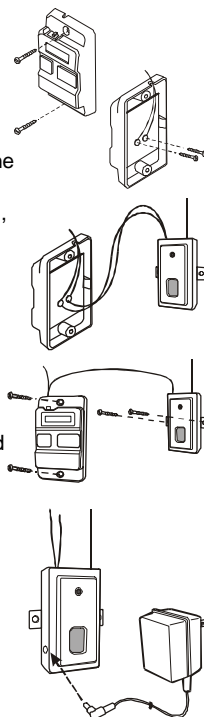
- 1) operate the garage door opener lighting,
- 2) lock the receiver so it doesn't accept remote control operation, and
- 3) push button for door opening / closing



## 2. INSTALLATION (CONT)

If you have the multi-function wall console, do not replace the wall console by the Smart Button™. You need to install the Smart Button™ in parallel with your existing wall console.

1. Remove the existing wall console from the wall by removing the screws.
2. Remove the 2 screws that secure the wires on the wall console.
3. Connect the wires from the Smart Button™ to the existing wall console. Polarity does not matter, so simply pick one wire from the Smart Button™, and connect it to one of the terminals on the existing wall console. Do the same for the 2nd wire.
4. After connecting the wires, mount the Smart Button™ on to the wall with 2 screws. Also mount the original wall console on to the wall.
5. Plug in the AC cord of the garage door opener. The red light on the Smart Button™ should flash 15 seconds after plugging in the power. The red light will not flash immediately after plugging in the power, which is normal. The Smart Button™ is now ready to be operated.
6. If the Smart Button™ red light does not flash at all 2 minutes after plugging in the AC cord, your garage door opener is probably too old. However, the Smart Button™ will still work by plugging in an adapter (purchase separately). Please contact Skylink® to purchase the adapter.

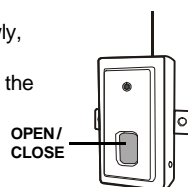


**Rating of the transformer:** 12V DC, 100mA Diameter of DC plug : 3.5mm

*Note: Straighten up the antenna to improve signal reception.*

## 3. OPERATION

If the red light on the Smart Button™ is flashing slowly, that indicates it is in standby mode. When a valid remote control signal is received, it will open / close the garage door. Simply press the button on the remote control or Smart Button™, it will open / close the garage door.

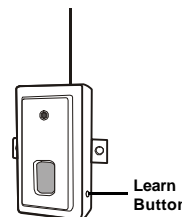


### Programming

#### Learn additional remote controls

Smart Button™ can learn up to 15 remote controls. To learn additional remote controls, follow the instructions below:

1. Press the learn button on the side of the GTR.
2. Once the learn button is pressed, the LED will flash quickly. You may release the learn button.
3. Press the button on the remote control you would like to program.
4. Once the remote control is programmed, the LED will flash slowly, in the same way as it flashes in standby mode.
5. You may now operate the garage door opener with this new remote control.



### 3. OPERATION (CONT)

#### Erase remote controls

To erase unwanted remote control(s), first erase all remote controls, then learn the ones you would like to keep.

To erase remote control(s)

1. Press and hold the learn button for approx 10 seconds.
2. The LED will flash rapidly after 10 seconds to indicate all the programmed remote controls have been erased. You may now release the learn button.
3. You have erased all the remote controls in the Smart Button™.

### 4. BATTERY

12 volt alkaline battery (size 23A) included.



### 5. ADDITIONAL TRANSMITTER

You can add up to 15 additional transmitters to control the same receiver. Skylink® offers Visor Transmitters and Keypad Transmitters to work with your receiver. For more information, please visit our website at [www.skylinkhome.com](http://www.skylinkhome.com) or contact us.



### 6. WARNING

DO NOT let children use the garage door transmitter without adult supervision. Children can injure themselves or others by the garage door.

### 7. FCC

The Garage Door Remote Control is approved by the FCC and it complies with Part 15 of the FCC Rules. Its operation is subject to the following two conditions :

1. This device may not cause harmful interference.
2. This device must accept any interference that may cause undesired operation.

#### WARNING:

Changes or modifications to this unit not expressly approved by the party responsible of compliance could void the user's authority to operate the equipment.

### 8. WARRANTY

If, within one year from date of purchase, this product should become defective (except battery), due to faulty workmanship or materials, it will be repaired or replaced, without charge. Proof of purchase and a Return Authorization are required.

### 9. CUSTOMER SERVICE

If you would like to order Skylink's product or have difficulty getting your Skylink remote control to work, please :

1. visit our FAQ section at [www.skylinkhome.com](http://www.skylinkhome.com), or
2. email us at [support@skylinkhome.com](mailto:support@skylinkhome.com), or
3. call our toll free at 1-800-304-1187 from Monday to Friday, 9 am to 5 pm EST.  
Fax (800) 286-1320

#### CUSTOMER SERVICE

17 Sheard Avenue, Brampton, Ontario, Canada L6Y 1J3

Email: [support@skylinkhome.com](mailto:support@skylinkhome.com)

<http://www.skylinkhome.com>

P/N. 101Z479

US Patent. D380895, 5680134, 5841390, 6005508, 6956460

® are registered trademarks of their respective corporations

©2007 SKYLINK GROUP